

Your future lies
in Zurich North





Zurich North is on the up: excellent transport links and dynamic urban development are turning this former industrial area into a modern services hub and a much sought-after location.

Soaring high: the 80-metre-high Franklinturm, a spectacular design by Zurich's Armon Semadeni architectural studio, stands on the grounds of the new Zurich Oerlikon train station. Together with the Andreasturm, it will dominate the skyline of this booming district.

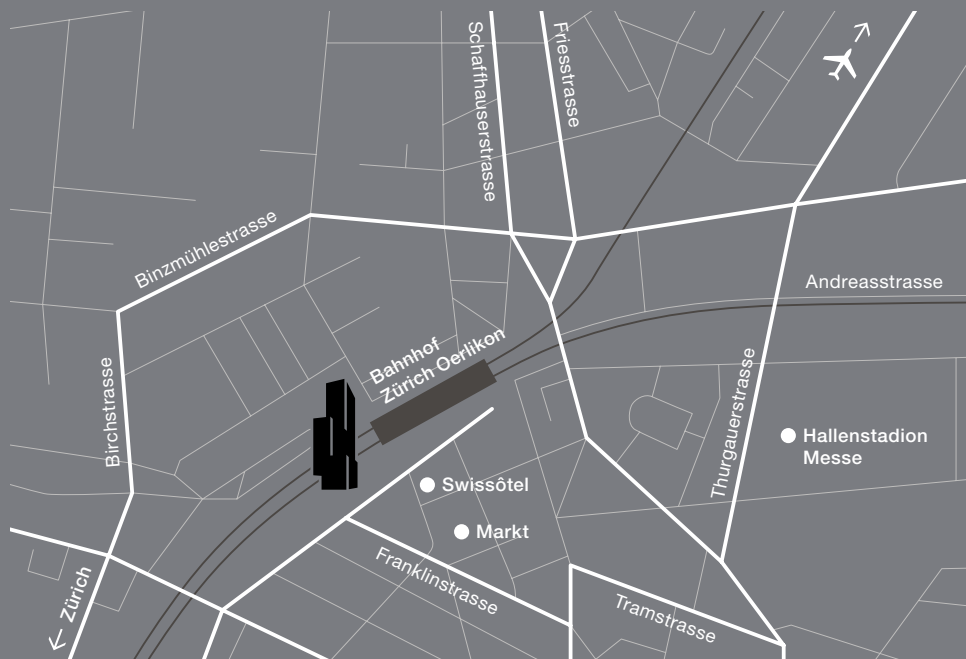
Business with future prospects: with 14,800 m² of office space and a variety of retail and restaurant units, the Franklinturm provides outstanding prospects for your business – prestige, flexible use and excellent transport links

**Space for your
business with
sublime views.**

The best connections:

	by car	by train
Bern	87 min	82 min
Basel	62 min	67 min
Luzern	53 min	58 min
St. Gallen	52 min	67 min
Schaffhausen	34 min	52 min

Location



Whether as a banking centre, a location for business, a cultural hub or unofficial capital city: Zurich's appeal extends well beyond the borders of Switzerland and the quality of life it provides is right at the top of international rankings.

Zurich North, where the clatter of machinery could once be heard, is now home to global service providers and technology firms. The smooth running Zurich Airport and seamless links to the European rail and road networks ensure quick and easy access – for business or private travel.

Zurich North: part of a city with global standing.



1 Messe Zürich 2 Giesserei Oerlikon Restaurant 3 MFO-Park 4 Farmers' market



Situated at Zurich Oerlikon railway station itself, excellent transport connections make the Franklinturm the ideal business location. Zurich Oerlikon is a major transport hub. The importance of what will in future be Switzerland's sixth largest railway station increased further when the cross-city line Zurich was completed in 2015.

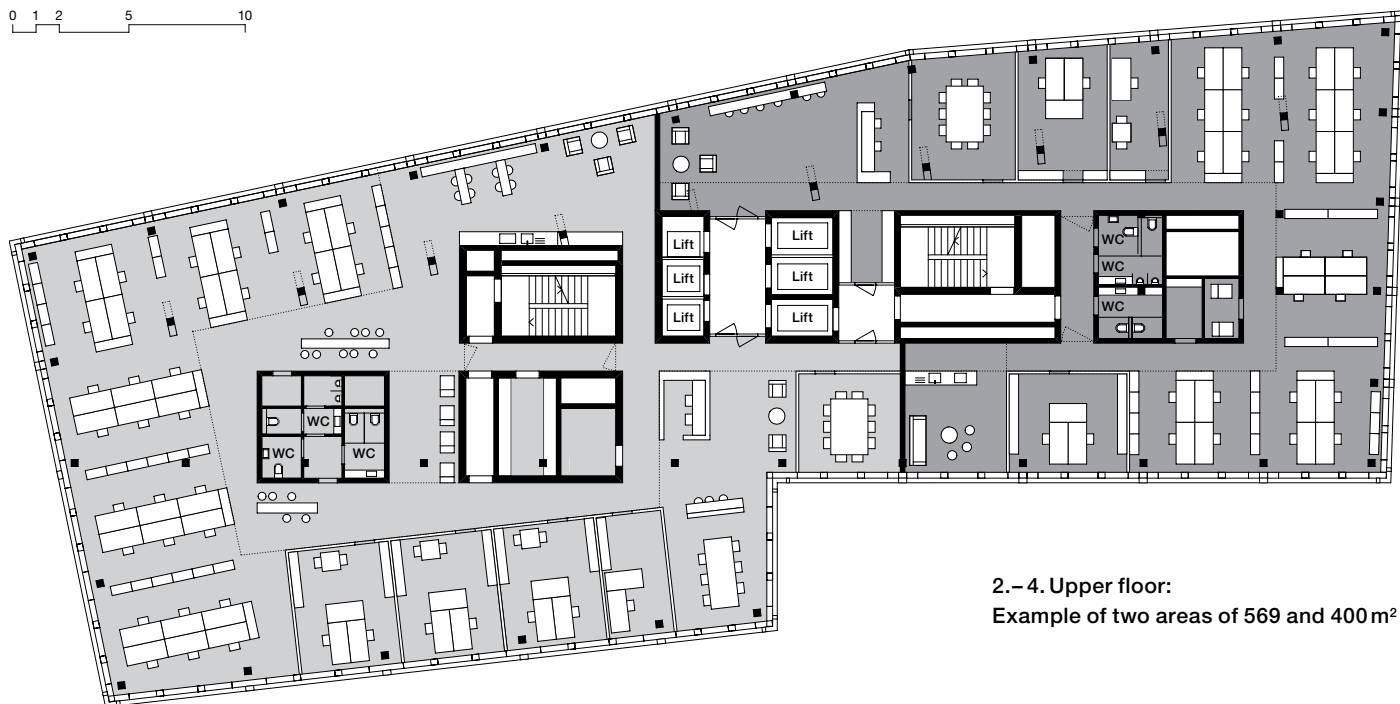
You can virtually take the train straight from the meeting room to the airport in just five minutes. Or you can get to Zurich main station in seven minutes – a huge benefit for employees and clients alike. 40 shops and restaurants provide for a vibrant station atmosphere. Around 130,000 people use the hub each day – a figure that's set to rise in future, eventually making Zurich Oerlikon station the focal point of vibrant urban life.

Office space with its own railway station

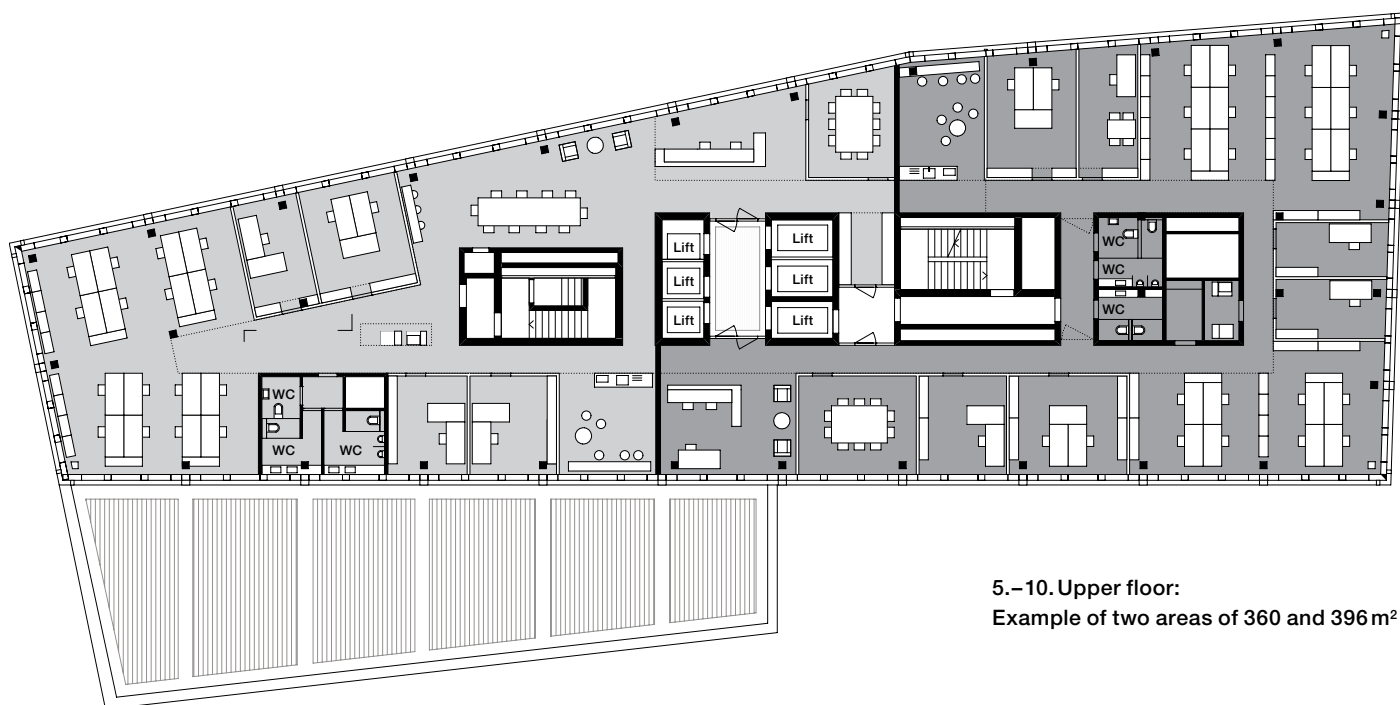


Inspiring views, unlimited possibilities. Within the Franklinturm's extraordinary exterior are light-filled rental units and a high-quality structure which can be individually configured. The spaces on the individual floors can be structured in line with your wishes and requirements – whether you prefer open-plan offices or partitioned individual workspaces. Whatever you decide, one thing is for sure: spectacular views.

0 1 2 5 10

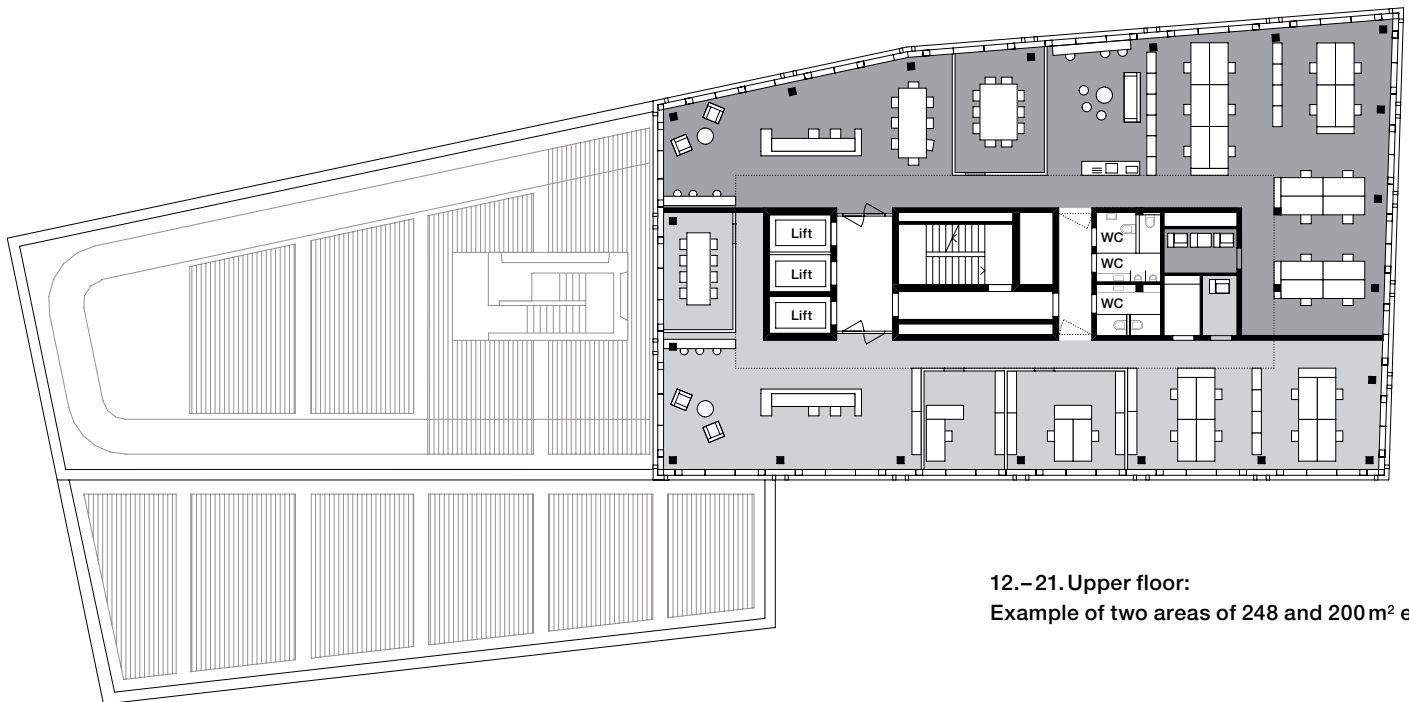
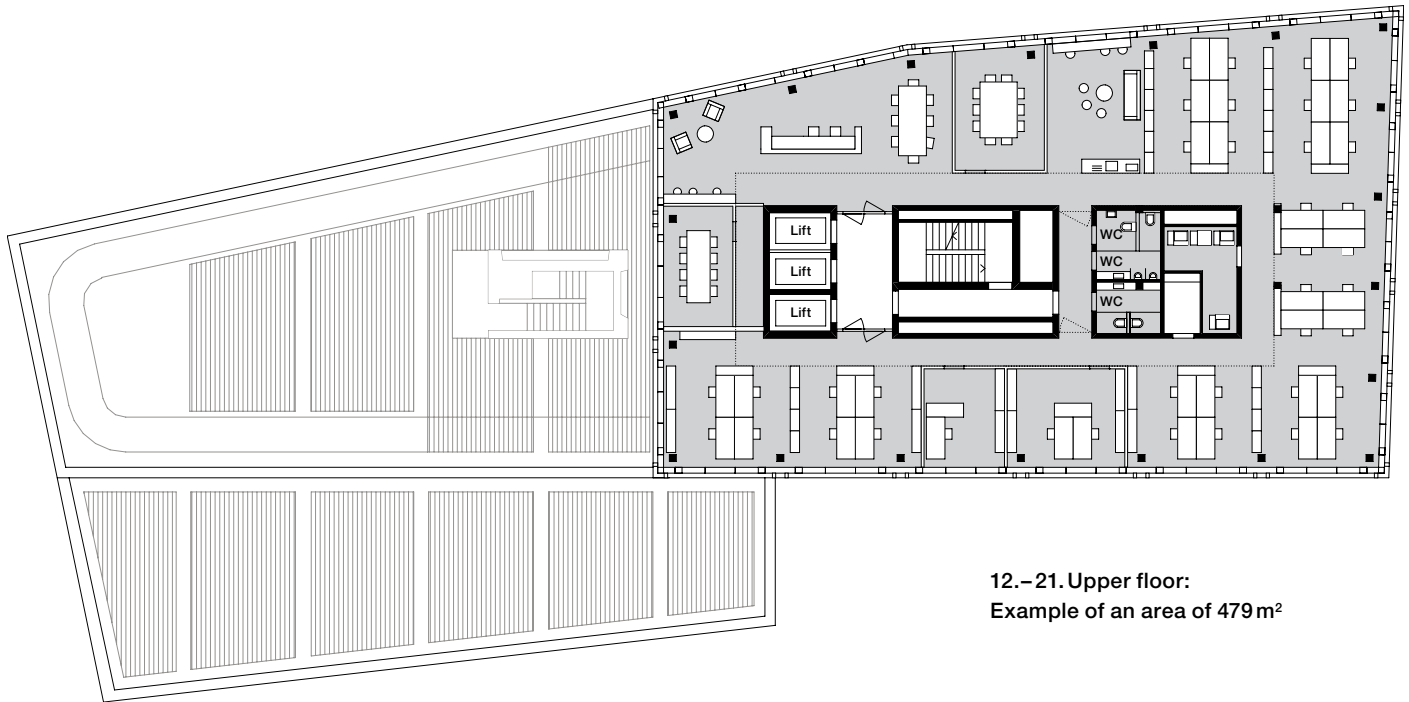


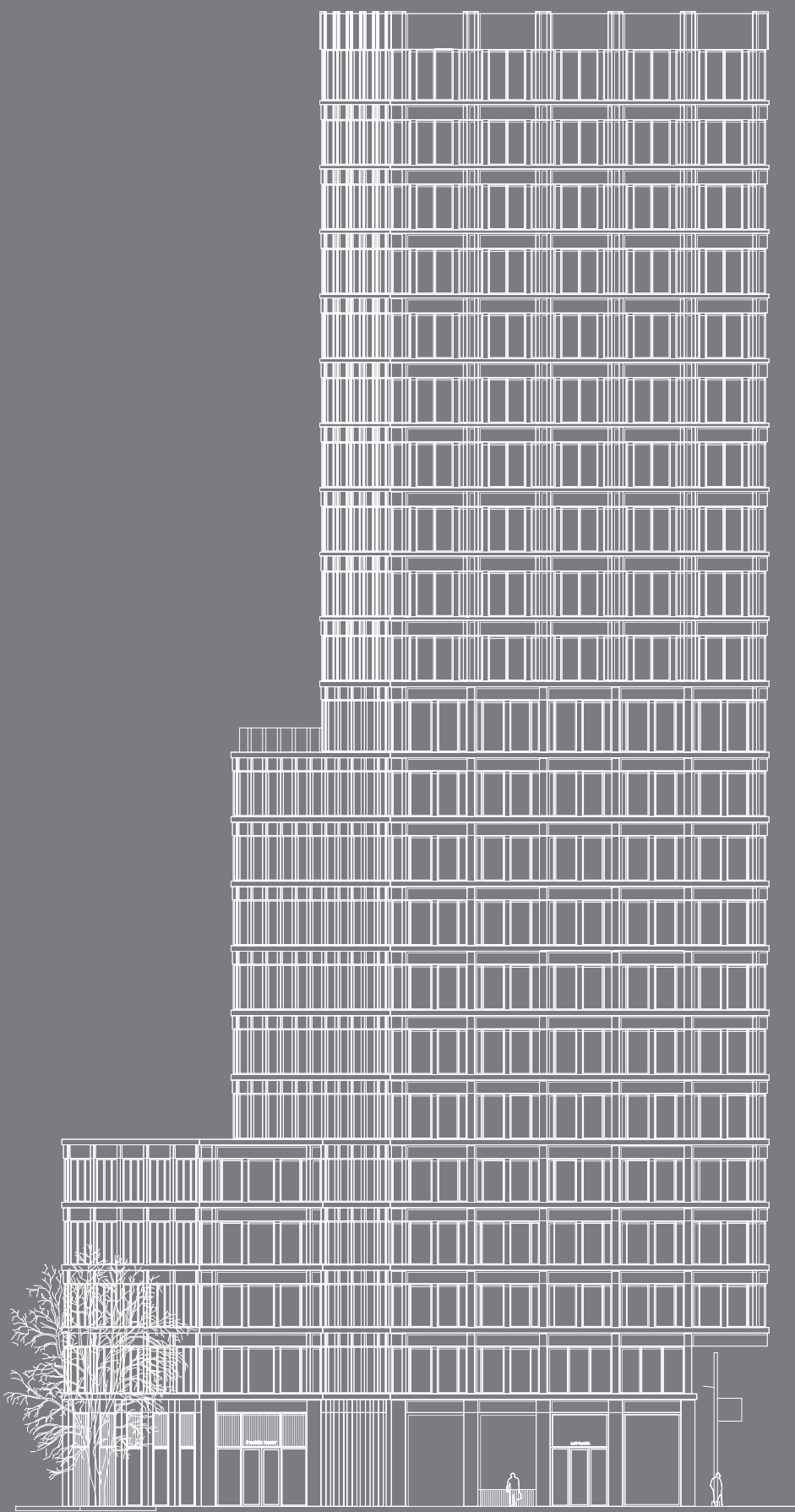
2.– 4. Upper floor:
Example of two areas of 569 and 400 m² each



5.– 10. Upper floor:
Example of two areas of 360 and 396 m² each

Available areas in the Franklinturm





21. UF 476 m²

20. UF 476 m²

19. UF 476 m²

18. UF 476 m²

17. UF 476 m²

16. UF 476 m²

15. UF 476 m²

14. UF 476 m²

13. UF 476 m²

12. UF 476 m²

11. UF 476 m²

10. UF 750 m²

9. UF 750 m²

8. UF 750 m²

7. UF 750 m²

6. UF 750 m²

5. UF let

4. UF let

3. UF 964 m²

2. UF 964 m²

1. UF 577 m²



**Ready to start
your journey
to the top?**

Learn more at
franklinturm.ch/en

An SBB Real Estate project. No claims resulting from any of the plans, drawings, visualisations or details in this brochure can be accepted. These elements do not form part of the contract and are based on the status of the project at the time of printing the brochure.